

## BASCD Survey report

# The dental caries experience of 11-year-old children in Great Britain. Surveys coordinated by the British Association for the Study of Community Dentistry in 2004 / 2005

N.B. Pitts<sup>1</sup>, J. Boyles<sup>2</sup>, Z.J. Nugent<sup>1</sup>, N. Thomas<sup>3</sup> and C.M. Pine<sup>4</sup>

1. Dental Health Services Research Unit, University of Dundee's Health Informatics Centre, Dundee; 2. Bristol South and West PCT, Bristol; 3. Rotherham PCT, Rotherham; 4. School of Dental Studies, University of Liverpool, Liverpool.

**Objective** This paper reports the results of standardized clinical caries examinations of 11-year-old children from across England and Wales, Scotland, Isle of Man, and Jersey in 2004/5. These co-ordinated surveys are the latest in a series which seek to monitor the dental health of children and to assess the delivery of dental services. **Method** The criteria and conventions of the British Association for the Study of Community Dentistry were used. Representative samples were drawn from participating strategic health authorities (SHAs), primary care trusts (PCTs), health boards (HBs), and local health boards (LHBs). Caries was diagnosed at the caries into dentine threshold using a visual method without radiography or fibre-optic transillumination. **Results** The results again demonstrated a wide variation in disease prevalence and care strategies across Great Britain. Mean values for D<sub>3</sub>MFT within the current English strategic health authorities ranged from 0.19 in Harlow to 1.32 in North Manchester and in Salford; in Wales mean values ranged from 0.69 in Vale of Glamorgan to 2.09 in Blaenau Gwent; while in Scotland they ranged from 0.59 in Orkney to 1.77 in Western Isles. Mean D<sub>3</sub>MFT across England was 0.64 (D<sub>3</sub>T = 0.32, MT = 0.06, FT = 0.25), across Wales it was 1.09 (D<sub>3</sub>T = 0.48, MT = 0.11, FT = 0.50), and across Scotland values were 1.29 (D<sub>3</sub>T = 0.52, MT = 0.17, FT = 0.60). Overall, 31.3% of children in England & Wales and 47.1 % of children inspected in Scotland had evidence of caries experience in dentine (D<sub>3</sub>MFT > 0, including visual dentine caries). As in previous surveys, the distribution of caries was highly skewed. Thus the mean caries experience for those with dentinal decay in England and Wales was 2.12, as opposed to the overall mean of 0.66; in Scotland the corresponding values were 2.74 and 1.29. Trends over time demonstrate an improvement in overall mean D<sub>3</sub>MFT for England and Wales since the 2000/2001 of 12-year-olds, although part of this difference is accountable to the younger age, at examination, in this survey. The mean value for those with dentine decay experience was also marginally less at 2.12 compared with 2.35 in the previous survey. (Figures for Scotland were not included in the 2000/2001 survey.) The care index was also found to be marginally lower than previously at 41% compared with 48% but again the younger age of the children would influence this value. **Conclusion** Dental health of 11-year-old children has been surveyed in Great Britain, Jersey, and the Isle of Man: being a slightly younger mean age than in previous BASCD surveys. Geographic variation in oral health is marked at both the local and national levels. Overall, the provision of operative care for those with dentinal decay is around 42%. While many children enjoy good oral health, sizable groups remain within the population of 11-year-old children who have a clinically significant burden of preventable dental disease.

*Key words:* caries prevalence, dental caries, dental epidemiology, national surveys, oral health

### Introduction

This paper sets out the results of the most recent series of surveys, this year for the first time at age 11, conducted within the National Health Services (NHS) under the auspices of the British Association for the Study of Community Dentistry (BASCD) Dental Epidemiology Programme during 2004/2005. The programme seeks to monitor the dental health of children and contributes to the national monitoring of service provision and targets, while providing data locally to aid in service planning and evaluation of oral health strategies.

### Method

The agreed BASCD criteria and conventions (as set out in the BASCD trainer's pack) were employed. Please consult the supplement to this programme for details of the methodology (Pitts, 1997). Dental caries was detected

using clinical visual diagnostic criteria at the D<sub>3</sub> (caries into dentine) threshold.

### Results

A total of 135,075 ten and eleven-year-old children from across Great Britain, the Isle of Man, and Jersey were examined, some 27% more than in the 2000/2001 survey which omitted Scotland. (Pitts, et al, 2002). On average, this represents 21% of the total population of this age group, although in the different areas there was a wide range in the size of samples chosen according to local needs and practices. Table 1 shows total populations and samples, results for DMFT and its components, sealed teeth, the percentage of and mean disease experience for children with DMFT > 0 and DT > 0, and values for care index percentage (FT/DMFT x 100%) for every participating health authority, local health board, or health board, and for the current 'regions' (of the National Health Service

**Table 1.** Population, ages, mean D<sub>3</sub>MFT and components, sound teeth, sealed teeth, proportion with dental caries experience, means for those with disease, percentage with abscess / sepsis, and care index for Great Britain, Isle of Man, and Jersey by appropriate health area. BASCD coordinated NHS epidemiological programme survey of 11-year-old children – 2004/2005.

Region / SHA / PCT / LHB / HB	Population										% Sealed	% with Abscess / Sepsis	Care Index		
	Total	Sample	Age	DT	MT	FT	DMFT	SOUND	SEAL	DMFT>0				DT>0	Mean
<b>ENGLAND</b>	<b>545544</b>	<b>116287</b>	<b>11.05</b>	<b>0.32</b>	<b>0.06</b>	<b>0.25</b>	<b>0.64</b>	<b>18.6</b>	<b>0.41</b>	<b>30.4</b>	<b>2.09</b>	<b>18.1</b>	<b>1.75</b>	<b>16.5</b>	<b>40</b>
London	63691	13950	11.03	0.23	0.04	0.22	0.49	19.9	0.32	24.9	1.96	14.0	1.63	12.9	45
North Central	6603	3140	11.13	0.15	0.05	0.28	0.48	20.0	0.70	23.5	2.04	10.1	1.48	25.4	59
Barnet	3352	290	11.32	0.15	0.07	0.32	0.54	20.7	0.91	25.5	2.11	10.7	1.39	29.0	59
Camden	1454	1381	10.91	0.16	0.02	0.25	0.44	19.3	0.44	21.7	2.02	10.2	1.60	20.3	57
Islington	1797	1469	10.96	0.14	0.03	0.24	0.41	19.3	0.53	21.3	1.92	9.0	1.57	22.9	59
North East	19255	2194	11.03	0.24	0.04	0.22	0.51	19.9	0.27	25.7	1.97	14.5	1.69	10.9	43
Barking & Dagenham	2415	311	11.03	0.27	0.04	0.33	0.64	18.5	0.41	32.5	1.98	17.7	1.55	17.0	52
City & Hackney	2118	340	11.01	0.22	0.05	0.19	0.46	20.8	0.12	23.2	1.98	11.8	1.88	5.0	41
Havering	2928	299	11.14	0.29	0.04	0.24	0.57	19.2	0.35	30.1	1.90	18.1	1.61	13.4	42
Newham	3712	350	11.12	0.31	0.01	0.17	0.50	20.5	0.34	25.1	1.99	18.3	1.70	17.4	34
Redbridge	2590	311	10.82	0.20	0.05	0.12	0.37	21.4	0.19	16.4	2.27	8.7	2.26	5.5	32
Tower Hamlets	2619	313	11.06	0.24	0.10	0.17	0.51	19.9	0.12	25.2	2.03	14.4	1.67	5.1	33
Waltham Forest	2873	270	10.96	0.15	0.03	0.30	0.49	19.4	0.27	26.7	1.82	10.7	1.41	9.3	61
North West	16886	2443	11.06	0.28	0.04	0.26	0.57	19.7	0.33	28.8	1.98	16.8	1.63	13.7	45
Brent	2873	369	11.08	0.29	0.05	0.18	0.52	20.0	0.34	24.7	2.11	17.1	1.68	13.0	35
Ealing	3321	250	11.27	0.23	0.02	0.38	0.63	20.5	0.33	32.4	1.95	15.2	1.53	14.8	60
Hammersmith & Fulham	1211	279	11.02	0.35	0.05	0.23	0.63	19.7	0.37	33.7	1.86	23.7	1.47	14.0	37
Harrow	1850	373	10.99	0.07	0.00	0.18	0.25	19.7	0.24	16.1	1.57	5.4	1.30	11.3	72
Hillingdon	3102	295	10.94	0.54	0.02	0.25	0.81	18.6	0.34	37.6	2.14	28.1	1.90	14.2	31
Hounslow	2407	280	11.02	0.17	0.04	0.27	0.48	19.8	0.32	26.4	1.80	12.1	1.41	12.5	56
Kensington & Chelsea	852	297	11.09	0.20	0.06	0.33	0.59	19.6	0.29	28.3	2.08	14.5	1.37	13.8	56
Westminster	1270	300	10.93	0.21	0.11	0.20	0.52	19.6	0.38	25.7	2.03	13.7	1.51	16.3	38
South East	8648	628	11.10	0.18	0.02	0.15	0.35	21.2	0.23	21.0	1.70	13.4	1.37	11.1	43
Lambeth	2644	224	11.08	0.12	0.04	0.16	0.32	20.5	0.32	19.6	1.63	9.8	1.18	12.1	50
Lewisham	2867	177	11.01	0.14	0.01	0.10	0.25	21.0	0.16	16.4	1.55	9.6	1.47	7.9	40
Southwark	3137	227	11.19	0.28	0.01	0.19	0.48	21.9	0.22	26.4	1.82	19.8	1.41	13.2	40
South West	12299	5545	10.91	0.21	0.04	0.18	0.44	19.2	0.24	21.9	2.01	11.6	1.82	9.7	41

Croydon	4525	3429	10.93	0.22	0.05	0.18	0.46	19.8	0.17	22.4	2.04	11.8	1.87	8.0	39
Kingston	942	599	10.95	0.20	0.01	0.14	0.35	20.9	0.11	13.2	2.62	7.2	2.74	2.2	40
Richmond & Twickenham	1055	550	10.93	0.09	0.02	0.19	0.30	21.1	0.18	11.6	2.56	4.4	2.17	4.5	63
Sutton & Merton	3718	615	10.89	0.19	0.05	0.22	0.46	17.9	0.33	24.7	1.84	11.4	1.61	14.1	48
Wandsworth	2059	352	10.88	0.31	0.05	0.13	0.49	18.3	0.30	25.3	1.96	17.6	1.77	11.4	27
Midlands & The East	171282	39751	11.07	0.23	0.05	0.23	0.51	18.7	0.36	26.3	1.95	14.1	1.63	14.1	45
Bedford & Hertfordshire	20804	1875	11.30	0.17	0.04	0.27	0.48	19.5	0.61	24.8	1.94	11.3	1.53	23.2	55
Bedford	1704	295	11.28	0.34	0.03	0.30	0.66	19.5	0.50	32.2	2.06	20.7	1.64	23.4	45
Bedfordshire Heartlands	3164	286	11.31	0.24	0.02	0.24	0.50	19.1	0.73	28.0	1.80	14.3	1.66	26.9	48
Luton	2566	270	11.34	0.46	0.10	0.21	0.77	19.8	0.55	35.9	2.13	27.8	1.64	23.0	27
North Herts & Stevenage PCT & Welwyn & Hatfield PCT	3841	263	11.25	0.10	0.05	0.33	0.48	19.1	0.50	24.7	1.95	8.7	1.17	18.6	69
South East Herts PCT & Buntingford&Bishops Stortford PCT	3010	248	11.32	0.06	0.03	0.25	0.34	19.8	0.53	18.5	1.83	4.0	1.40	19.4	74
St. Albans & Harpenden PCT & Hertsmere PCT	2960	267	11.31	0.05	0.02	0.22	0.29	20.1	0.65	17.6	1.66	4.5	1.17	25.1	76
Watford & Three Rivers PCT & Dacorum PCT	3559	246	11.30	0.11	0.04	0.30	0.45	19.4	0.76	22.0	2.04	6.9	1.53	26.4	67
Birmingham & Black Country	29551	12109	10.98	0.19	0.05	0.20	0.44	18.6	0.24	23.9	1.84	12.5	1.55	10.9	45
Dudley Beacon & Castle	1086	1047		0.21	0.04	0.19	0.44	17.4	0.16	22.3	1.96	11.8	1.75	6.1	43
Dudley South	2588	2482		0.10	0.04	0.18	0.32	18.1	0.21	18.1	1.76	6.9	1.50	8.2	56
Eastern Birmingham	2082	309	10.98	0.16	0.04	0.22	0.42	20.2	0.39	23.3	1.79	10.7	1.52	15.9	52
Heart of Birmingham	4200	344	10.93	0.13	0.05	0.18	0.36	19.1	0.22	22.1	1.62	9.9	1.26	8.1	50
North Birmingham	2783	298	10.97	0.20	0.03	0.16	0.40	18.9	0.18	24.2	1.65	15.4	1.30	7.4	40
Oldbury & Smethwick	1498	1370	11.10	0.10	0.05	0.25	0.41	19.4	0.21	21.2	1.92	6.7	1.52	8.3	61
Rowley Regis & Tipton	870	850	11.01	0.10	0.02	0.26	0.38	18.5	0.16	21.2	1.81	7.2	1.46	9.1	68
Solihull	2770	335	10.90	0.39	0.07	0.21	0.67	17.2	0.61	33.7	2.00	23.3	1.68	23.3	31
South Birmingham	3861	336	10.97	0.10	0.06	0.19	0.36	18.5	0.16	19.9	1.79	7.4	1.40	8.6	53
Walsall	3415	3150	10.98	0.20	0.05	0.19	0.44	18.6	0.19	23.9	1.85	12.0	1.69	17.2	43
Wednesbury & West Bromwich	1324	1250	11.11	0.11	0.06	0.25	0.42	19.3	0.17	22.2	1.87	6.3	1.70	6.9	60
Wolverhampton City	3074	338	10.98	0.42	0.02	0.19	0.63	17.8	0.18	30.8	2.05	24.3	1.72	7.1	30
Coventry, Warwickshire, Herefordshire & Worcestershire	17707	7006	11.00	0.17	0.05	0.20	0.42	18.9	0.28	23.1	1.83	11.6	1.50	12.4	47
Coventry	3702	332	10.91	0.16	0.05	0.17	0.39	19.3	0.15	22.6	1.71	12.0	1.33	6.9	44
Herefordshire	1966	324	10.95	0.34	0.05	0.23	0.62	19.9	0.53	30.9	2.00	19.4	1.73	21.3	37

North Warwickshire	2373	301	11.15	0.20	0.03	0.23	0.46	19.1	0.27	22.6	2.03	11.3	1.76	11.0	50
Redditch & Bromsgrove	1910	1702	10.94	0.11	0.04	0.17	0.33	18.2	0.31	18.9	1.73	8.1	1.41	13.6	52
Rugby	1062	278	11.16	0.15	0.07	0.19	0.41	19.1	0.50	20.9	1.98	9.0	1.72	21.2	46
South Warwickshire	2533	378	10.97	0.17	0.03	0.20	0.40	18.1	0.25	24.6	1.63	13.2	1.31	12.7	50
South Worcestershire	3021	2713	11.00	0.10	0.04	0.19	0.33	18.5	0.21	18.9	1.76	7.2	1.37	9.3	58
Wyre Forest	1140	978	11.05	0.20	0.10	0.28	0.58	18.6	0.34	28.7	2.02	13.0	1.52	15.8	48
Essex	9588	2473	11.00	0.15	0.04	0.20	0.39	18.1	0.75	21.4	1.83	9.8	1.53	14.5	52
Chelmsford	1452	318	10.95	0.29	0.07	0.19	0.55	17.9	1.26	28.6	1.92	17.9	1.60	19.5	35
Colchester	1850	295	10.91	0.13	0.04	0.17	0.33	17.8	0.29	20.7	1.61	8.1	1.54	10.5	52
Epping Forest	965	258	11.33	0.04	0.03	0.24	0.31	18.3	0.16	15.5	2.00	1.6	2.50	3.9	77
Harlow	907	252	10.98	0.10	0.02	0.08	0.19	17.3	0.06	11.5	1.69	7.5	1.32	1.6	42
Maldon & South Chelmsford	1090	313	10.97	0.18	0.00	0.28	0.46	17.8	2.14	24.0	1.92	11.2	1.60	30.4	61
Tendring	1100	389	10.93	0.12	0.04	0.20	0.36	18.3	0.19	20.6	1.75	8.2	1.50	10.0	56
Uttlesford	761	256	10.62	0.09	0.02	0.20	0.31	18.7	0.60	18.8	1.69	7.0	1.28	24.6	65
Witham, Braintree & Halstead	1463	392	11.22	0.18	0.07	0.24	0.49	19.0	1.12	25.3	1.95	12.2	1.48	16.1	49
Leicestershire, Northampton & Rutland	19042	2921	10.95	0.30	0.07	0.23	0.60	17.8	0.35	30.5	1.94	17.8	1.67	13.6	39
Charnwood & North West Leicestershire	2660	307	10.92	0.46	0.04	0.25	0.76	17.5	0.32	38.1	1.98	26.4	1.75	14.7	33
Daventry & South Northants	1492	274	11.07	0.04	0.06	0.20	0.30	18.5	0.41	17.2	1.74	3.7	1.00	3.7	67
Eastern Leicester	2216	284	10.96	0.46	0.07	0.26	0.79	18.2	0.21	37.7	2.10	26.8	1.74	9.5	33
Hinckley & Bosworth	1213	294	10.95	0.35	0.04	0.19	0.58	16.9	0.61	29.3	1.99	22.1	1.60	21.4	33
Leicester City West	1676	291	10.95	0.51	0.14	0.24	0.89	18.4	0.30	44.7	1.98	32.6	1.56	11.7	27
Melton Rutland & Harborough	1842	277	11.02	0.30	0.09	0.19	0.58	17.7	0.46	30.7	1.91	18.8	1.60	19.5	33
Northampton	2344	359	10.84	0.12	0.08	0.23	0.43	17.5	0.33	22.3	1.94	6.4	1.87	14.5	53
Northamptonshire Heartlands	3366	586	10.97	0.11	0.07	0.27	0.45	18.2	0.28	23.2	1.87	7.0	1.57	12.5	60
South Leicestershire	2233	249	10.92	0.39	0.03	0.19	0.60	17.0	0.44	32.9	1.83	22.1	1.75	16.1	32
Norfolk, Suffolk & Cambridgeshire	24026	4364	11.29	0.29	0.03	0.23	0.55	19.3	0.33	27.2	2.03	16.6	1.75	13.6	42
Broadland	1075	286	11.37	0.49	0.04	0.35	0.88	19.7	0.12	37.8	2.32	28.0	1.74	3.5	40
Cambridge City PCT & South Cambridgeshire PCT	2371	280	11.22	0.37	0.04	0.28	0.69	19.0	0.69	33.2	2.06	22.1	1.68	26.1	41
Central Suffolk	1089	271	11.32	0.17	0.04	0.20	0.41	20.2	0.34	22.9	1.79	11.8	1.44	16.2	49
East Cambridgeshire & Fenland	1995	282	11.27	0.30	0.06	0.17	0.54	19.6	0.45	27.7	1.94	17.4	1.71	17.7	31
Great Yarmouth	1113	310	11.33	0.25	0.06	0.26	0.58	19.6	0.15	30.6	1.91	16.8	1.52	8.4	45
Huntingdonshire	1867	272	11.31	0.13	0.02	0.24	0.39	19.0	0.40	22.1	1.75	9.6	1.38	19.1	62

Ipswich	1734	273	11.27	0.21	0.00	0.22	0.43	19.1	0.25	21.2	2.03	12.5	1.68	12.5	51
North Norfolk	753	253	11.33	0.87	0.03	0.28	1.17	19.1	0.17	47.0	2.50	38.7	2.23	6.3	24
North Peterborough	1387	245	11.25	0.11	0.02	0.22	0.34	19.5	0.12	20.4	1.68	7.8	1.37	6.5	65
Norwich	918	249	11.31	0.67	0.02	0.35	1.04	18.4	0.14	44.6	2.34	36.1	1.86	4.8	34
South Peterborough	1240	276	11.32	0.02	0.00	0.18	0.20	20.2	0.13	12.7	1.60	1.1	1.67	6.5	90
Southern Norfolk	1925	251	11.28	0.64	0.01	0.16	0.81	18.5	0.26	36.7	2.21	31.9	2.00	9.6	20
Suffolk Coastal	1122	288	11.30	0.23	0.04	0.17	0.44	19.6	0.39	23.6	1.85	15.3	1.48	17.7	39
Suffolk West	2439	210	11.30	0.18	0.00	0.28	0.45	19.2	0.36	23.8	1.90	9.5	1.85	14.8	62
Waveney	1359	309	11.32	0.19	0.06	0.23	0.48	20.0	0.19	23.0	2.07	12.6	1.54	9.1	48
West Norfolk	1639	309	11.30	0.19	0.06	0.16	0.41	19.2	0.48	21.4	1.92	10.7	1.76	17.5	39
Shropshire & Staffordshire	17388	3258	10.97	0.26	0.08	0.25	0.58	18.5	0.35	28.5	2.04	15.5	1.66	14.6	43
Burntwood, Lichfield & Tamworth	1916	323	10.92	0.16	0.02	0.13	0.32	17.9	0.19	19.5	1.63	11.1	1.47	7.7	41
Cannock Chase	1269	403	10.96	0.13	0.06	0.21	0.40	18.0	0.23	21.6	1.84	9.9	1.33	8.2	53
East Staffordshire	1155	334	10.95	0.13	0.01	0.13	0.27	19.2	0.15	18.9	1.43	10.2	1.29	6.6	48
Newcastle-under-Lyme	1125	305	11.10	0.38	0.07	0.27	0.71	19.3	0.46	32.5	2.20	20.0	1.90	19.7	38
North Stoke	1375	304	10.83	0.57	0.08	0.34	0.98	17.5	0.44	45.4	2.16	32.9	1.72	21.1	35
Shropshire County	3230	351	10.88	0.34	0.13	0.31	0.78	18.1	0.31	33.3	2.35	18.2	1.88	14.5	40
South Stoke	1428	325	11.18	0.28	0.11	0.25	0.64	19.8	0.69	30.5	2.11	14.2	1.96	24.9	39
South Western Staffordshire	2529	282	11.01	0.11	0.09	0.21	0.40	19.3	0.23	21.3	1.90	7.8	1.32	10.3	53
Staffordshire Moorlands	1176	315	11.09	0.14	0.08	0.30	0.51	18.9	0.36	25.1	2.05	9.2	1.48	14.6	59
Telford & Wrekin	2185	316	10.94	0.32	0.07	0.29	0.68	18.0	0.49	34.8	1.95	20.9	1.52	20.6	43
Trent	33176	5745	11.04	0.26	0.06	0.25	0.57	18.3	0.27	28.1	2.01	15.4	1.69	12.3	44
Amber Valley	1487	238	10.86	0.26	0.11	0.27	0.65	18.5	0.12	26.5	2.44	13.4	1.97	7.6	42
Ashfield	1104	266	10.96	0.24	0.05	0.27	0.56	18.5	0.19	30.1	1.86	17.7	1.36	8.6	48
Bassetlaw	1084	281	10.73	0.22	0.02	0.12	0.37	16.9	0.30	22.1	1.66	14.2	1.58	13.9	32
Broxtowe & Hucknall	1696	232	11.54	0.45	0.01	0.24	0.70	18.2	0.39	34.1	2.05	24.1	1.88	17.7	34
Central Derby	1331	286	10.92	0.30	0.08	0.40	0.77	18.5	0.09	31.1	2.47	15.0	1.98	4.9	52
Chesterfield	1088	307	10.96	0.15	0.08	0.22	0.46	18.3	0.34	23.8	1.93	9.4	1.62	15.0	48
Derbyshire Dales & South Derbyshire	1034	279	10.90	0.18	0.06	0.32	0.56	18.1	0.21	26.2	2.14	11.5	1.59	10.0	57
East Lincolnshire	3153	310	10.87	0.22	0.07	0.24	0.53	18.3	0.17	26.5	1.99	14.2	1.52	7.7	45
Erewash	1198	270	11.12	0.21	0.12	0.37	0.70	18.7	0.19	31.1	2.26	11.9	1.78	12.6	53
Gedling	1319	248	11.11	0.33	0.02	0.24	0.59	18.7	0.38	31.9	1.86	21.4	1.56	16.5	41
Greater Derby	1882	286	10.90	0.24	0.10	0.26	0.60	18.3	0.31	29.7	2.02	15.4	1.57	14.0	43
High Peak & Dales	1477	497	10.96	0.17	0.07	0.26	0.51	18.2	0.54	25.4	1.99	9.1	1.89	24.7	51

Lincolnshire South West	2097	290	10.97	0.12	0.04	0.18	0.34	18.3	0.26	18.6	1.83	6.9	1.75	11.7	0.3	53
Mansfield	1775	283	10.90	0.24	0.05	0.24	0.53	17.9	0.24	29.0	1.82	15.9	1.53	13.4	0.0	45
Newark & Sherwood	1869	302	10.99	0.30	0.08	0.25	0.63	18.3	0.22	29.8	2.10	16.6	1.80	11.3	0.0	40
North Eastern Derbyshire	2379	569	11.02	0.16	0.05	0.31	0.52	18.4	0.43	28.1	1.86	10.0	1.58	19.2	0.2	60
Nottingham City	3260	228	11.54	0.58	0.05	0.22	0.85	19.1	0.18	39.5	2.13	31.1	1.87	7.5	0.4	26
Rushcliffe	1234	285	11.08	0.22	0.03	0.20	0.45	18.2	0.37	24.9	1.80	16.8	1.31	17.2	0.4	44
West Lincolnshire	2709	288	10.96	0.12	0.03	0.20	0.35	18.1	0.23	20.1	1.76	8.7	1.40	9.0	1.4	57
North	176511	42608	11.03	0.48	0.10	0.31	0.89	18.4	0.50	39.7	2.23	25.9	1.85	20.5		35
Cheshire & Merseyside	28357	17680	11.09	0.47	0.11	0.29	0.86	18.9	0.43	39.0	2.22	25.8	1.80	18.8		34
Bebington & West Wirral	1515	1404	10.98	0.34	0.05	0.24	0.64	18.5	0.46	29.4	2.16	19.0	1.78	19.2		38
Birkenhead & Wallasey	2354	2159	10.95	0.64	0.13	0.29	1.05	18.1	0.40	46.4	2.27	33.6	1.89	17.7		28
Central Cheshire	2666	2425	11.10	0.16	0.07	0.21	0.44	18.2	0.30	23.7	1.87	11.3	1.43	13.7		48
Central Liverpool	2843	282	11.23	0.42	0.12	0.28	0.82	20.5	0.41	37.9	2.15	25.2	1.66	17.4		34
Cheshire West	1659	1497	11.01	0.18	0.06	0.18	0.42	18.6	0.49	22.6	1.86	12.0	1.46	21.2		43
Eastern Cheshire	2039	307	10.97	0.46	0.12	0.24	0.82	18.1	0.62	34.2	2.39	22.2	2.06	24.8		29
Ellesmere Port & Neston	994	906	11.00	0.33	0.08	0.21	0.62	18.3	0.52	31.0	2.00	19.8	1.67	24.5		34
Halton	1517	1387	10.95	0.64	0.26	0.33	1.23	18.2	0.31	48.7	2.51	31.8	2.00	12.5		27
Knowsley	2102	1922	11.10	0.71	0.15	0.38	1.24	18.9	0.56	53.0	2.35	38.1	1.86	24.6		31
North Liverpool	1427	321	11.22	0.70	0.11	0.40	1.21	19.8	0.38	50.8	2.38	36.8	1.92	15.9		33
South Liverpool	1155	287	11.27	0.49	0.11	0.33	0.93	20.4	0.37	45.3	2.05	27.5	1.77	16.0		35
South Sefton	2216	303	11.20	0.61	0.08	0.43	1.12	19.6	0.46	51.8	2.17	35.6	1.72	21.1		38
Southport & Formby	1241	296	11.05	0.28	0.08	0.32	0.68	19.3	0.48	29.7	2.28	16.6	1.69	23.3		47
St Helens	2136	1975	11.08	0.58	0.11	0.31	1.00	18.7	0.49	45.3	2.21	31.6	1.83	21.0		31
Warrington	2493	2209	11.11	0.41	0.08	0.24	0.73	18.7	0.32	33.5	2.19	22.5	1.81	14.1		33
County Durham & Tees Valley	14390	2834	10.98	0.47	0.11	0.31	0.89	17.9	0.44	40.0	2.21	25.5	1.83	19.7	1.5	35
Darlington	1232	296	10.98	0.31	0.06	0.23	0.60	18.0	0.68	33.1	1.82	19.6	1.57	26.7	1.4	38
Derwentside	903	276	11.03	0.47	0.09	0.31	0.87	17.5	0.58	38.4	2.26	26.8	1.74	25.0	1.5	36
Durham & Chester-le-Street	1544	305	11.03	0.49	0.11	0.26	0.86	18.3	0.47	40.3	2.13	25.9	1.90	18.4	0.3	30
Durham Dales	1003	259	10.98	0.53	0.16	0.27	0.96	17.8	0.53	40.2	2.38	26.3	2.03	23.6	0.8	28
Easington	1271	269	10.94	0.50	0.07	0.24	0.81	17.7	0.22	38.7	2.11	29.0	1.73	10.8	0.4	30
Hartlepool	1226	295	10.99	0.29	0.05	0.16	0.50	17.9	0.25	27.5	1.81	18.0	1.60	9.5	1.4	32
Langhaugh	1918	267	10.92	0.50	0.09	0.42	1.01	18.0	0.48	42.3	2.38	25.5	1.97	21.3	2.2	42
Middlesborough	1689	303	10.93	0.62	0.17	0.50	1.29	18.0	0.43	54.5	2.36	35.0	1.76	21.5	2.0	39
North Tees	2466	255	10.94	0.40	0.09	0.30	0.78	17.5	0.47	37.3	2.11	22.4	1.77	22.4	2.7	38

Sedgefield	1138	309	11.19	0.57	0.20	0.33	1.11	19.0	0.34	44.0	2.51	26.9	2.12	15.9	0.3	30
Cumbria & Lancashire	23637	4473	11.09	0.53	0.12	0.32	0.97	18.7	0.45	42.1	2.31	27.7	1.92	19.4		33
Blackburn with Darwen	2040	287	10.80	0.61	0.11	0.37	1.09	17.8	0.64	44.6	2.45	28.6	2.15	24.7		34
Blackpool	1766	266	11.34	0.77	0.09	0.36	1.23	19.9	0.26	52.3	2.36	39.9	1.94	11.7		29
Burnley, Pendle & Rossendale	3163	457	10.98	0.36	0.09	0.32	0.76	18.1	0.45	37.4	2.02	22.3	1.61	19.7		42
Carlisle & District	1387	277	11.30	0.42	0.17	0.43	1.01	20.1	0.49	42.2	2.38	21.3	1.95	23.1		43
Chorley & South Ribble	2523	589	11.07	0.65	0.09	0.28	1.02	18.0	0.31	44.5	2.30	32.4	2.00	14.9		27
Eden Valley	807	271	11.23	0.31	0.16	0.28	0.75	20.0	0.65	32.5	2.32	18.1	1.73	24.7		37
Fylde	730	263	11.30	0.40	0.14	0.28	0.82	19.4	0.29	42.2	1.94	28.5	1.40	11.0		34
Hyndburn & Ribble Valley	1683	304	10.80	0.52	0.09	0.28	0.89	17.1	0.30	39.8	2.23	27.0	1.91	15.1		31
Morecambe Bay	3588	603	11.24	0.41	0.19	0.32	0.92	19.4	0.53	36.2	2.55	18.6	2.21	21.2		35
Preston	1783	321	11.31	0.80	0.11	0.30	1.21	18.9	0.38	51.1	2.38	38.9	2.06	18.1		25
West Cumbria	1622	282	10.92	0.45	0.16	0.24	0.85	18.2	0.64	39.7	2.15	25.9	1.75	24.5		28
West Lancashire	1325	281	10.81	0.62	0.10	0.33	1.04	17.7	0.67	44.5	2.34	33.1	1.87	29.2		32
Wyre	1220	272	11.33	0.62	0.08	0.31	1.01	19.7	0.28	44.5	2.26	33.8	1.83	13.2		31
Greater Manchester	32134	4370	10.99	0.51	0.09	0.32	0.93	18.7	0.57	41.0	2.27	27.2	1.89	22.8		35
Ashton, Leigh & Wigan	3810	338	10.97	0.55	0.06	0.27	0.88	18.9	0.51	39.6	2.22	29.0	1.91	20.4		31
Bolton	3434	393	10.99	0.42	0.11	0.37	0.90	18.5	0.46	40.0	2.26	25.4	1.66	20.1		41
Bury	2157	340	11.23	0.56	0.09	0.39	1.05	19.5	0.41	42.9	2.45	31.8	1.78	18.5		37
Central Manchester	1884	310	11.09	0.30	0.09	0.28	0.68	20.1	0.80	33.5	2.03	16.1	1.88	29.7		41
Heywood & Middleton	960	289	10.75	0.65	0.12	0.28	1.06	17.4	0.35	43.9	2.40	31.8	2.04	13.1		26
North Manchester	1868	290	11.03	0.65	0.18	0.49	1.32	19.0	0.93	53.8	2.45	32.1	2.02	35.2		37
Oldham	3079	321	10.78	0.67	0.12	0.30	1.09	17.7	0.35	47.7	2.29	35.5	1.89	15.6		28
Rochdale	1809	289	10.83	0.37	0.10	0.29	0.76	18.4	0.27	34.9	2.17	20.1	1.84	12.8		38
Salford	2660	278	11.16	0.81	0.17	0.34	1.32	18.6	0.52	49.6	2.65	34.2	2.38	19.4		26
South Manchester	1440	290	10.98	0.48	0.05	0.34	0.87	18.7	0.74	38.6	2.25	26.2	1.83	29.3		39
Stockport	3299	306	10.88	0.51	0.05	0.30	0.86	17.9	0.87	41.5	2.08	29.1	1.76	31.7		35
Tameside & Glossop	3174	314	11.22	0.38	0.04	0.33	0.75	19.7	0.41	34.1	2.21	20.4	1.84	16.9		44
Trafford North	1179	304	11.03	0.43	0.06	0.26	0.75	18.7	0.92	38.5	1.96	24.0	1.79	39.8		35
Trafford South	1381	308	10.77	0.26	0.06	0.26	0.57	17.6	0.65	30.5	1.89	16.2	1.56	29.5		46
North & East Yorkshire & Northern Lincolnshire	18706	3483	11.06	0.41	0.05	0.26	0.72	18.5	0.41	34.1	2.12	23.1	1.80	17.6		36
Craven Harrogate & Rural	2147	799	11.07	0.28	0.01	0.30	0.59	18.1	0.60	28.9	2.04	16.8	1.67	28.1		51
East Yorkshire	1876	431	11.04	0.34	0.03	0.32	0.70	18.3	0.57	35.0	2.01	21.1	1.63	23.9		46

Eastern Hull	1590	271	10.97	0.60	0.07	0.36	1.03	18.1	0.18	47.6	2.16	35.8	1.68	8.1	35
Hambleton & Richmondshire	1232	346	10.91	0.38	0.04	0.18	0.60	21.4	0.16	28.6	2.11	22.0	1.72	9.0	30
North East Lincolnshire	2097	318	11.23	0.53	0.06	0.27	0.86	19.6	0.22	39.6	2.16	28.9	1.83	12.0	31
North Lincolnshire	1968	272	11.19	0.45	0.07	0.23	0.75	18.5	0.11	34.2	2.20	24.3	1.85	7.0	31
Scarborough, Whitby & Ryedale	1600	214	11.08	0.69	0.09	0.21	0.99	18.6	0.39	39.7	2.49	32.7	2.11	15.4	21
Selby & York	2832	289	11.00	0.30	0.03	0.27	0.60	18.4	0.80	29.1	2.06	15.2	1.98	30.1	45
West Hull	1631	285	10.96	0.31	0.05	0.25	0.60	17.9	0.29	30.2	2.00	18.2	1.69	13.3	42
Yorkshire Wolds & Coast	1733	258	11.04	0.36	0.04	0.21	0.60	17.3	0.40	31.0	1.95	22.1	1.63	16.7	35
Northumberland, Tyne & Wear	16278	1880	10.98	0.45	0.10	0.28	0.83	17.8	0.58	38.5	2.15	24.9	1.81	22.3	34
Gateshead	2128	259	11.00	0.65	0.07	0.18	0.90	18.0	0.66	42.5	2.12	32.8	1.99	25.1	20
Newcastle	2890	310	10.95	0.49	0.10	0.28	0.87	18.0	0.54	44.5	1.96	29.0	1.69	21.9	32
North Tyneside	2377	310	10.92	0.45	0.08	0.18	0.71	16.8	0.66	31.0	2.29	22.3	2.03	21.9	25
Northumberland	3623	400	10.96	0.29	0.05	0.32	0.66	17.4	0.45	34.8	1.91	18.8	1.57	18.3	48
South Tyneside	1777	282	11.25	0.32	0.13	0.30	0.75	19.9	0.64	36.9	2.04	20.6	1.53	15.6	40
Sunderland	3483	319	10.90	0.52	0.15	0.38	1.05	17.5	0.63	41.1	2.55	27.0	1.93	28.8	36
South Yorkshire	15825	3312	10.91	0.44	0.09	0.31	0.84	17.7	0.49	38.4	2.18	23.7	1.86	20.0	37
Barnsley	2778	621	10.97	0.81	0.12	0.33	1.26	17.8	0.42	53.6	2.35	40.9	1.99	18.8	26
Doncaster Central	1200	267	10.93	0.50	0.08	0.39	0.96	17.7	0.37	46.4	2.06	30.0	1.65	13.9	41
Doncaster East	1305	262	10.93	0.77	0.07	0.31	1.15	17.7	0.37	51.5	2.23	40.8	1.90	17.2	27
Doncaster West	1685	254	10.92	0.62	0.09	0.47	1.18	18.3	0.34	49.6	2.38	31.9	1.94	15.4	40
North Sheffield	1492	298	10.86	0.37	0.11	0.33	0.80	17.4	0.72	36.9	2.17	18.8	1.95	27.9	41
Rotherham	2973	746	10.96	0.25	0.10	0.25	0.59	18.1	0.38	29.2	2.03	14.9	1.66	15.4	42
Sheffield South West	1150	285	10.79	0.14	0.01	0.29	0.45	17.5	0.58	23.2	1.94	8.4	1.71	22.1	64
Sheffield West	1151	297	10.85	0.08	0.08	0.25	0.41	17.1	0.92	22.2	1.85	5.7	1.35	34.0	61
South East Sheffield	2091	282	10.83	0.25	0.08	0.23	0.56	16.9	0.59	28.0	2.00	14.5	1.73	22.3	41
West Yorkshire	27184	4576	11.09	0.49	0.10	0.38	0.97	18.5	0.56	42.3	2.29	26.7	1.83	22.3	39
Airedale	1737	352	11.13	0.42	0.04	0.49	0.95	18.9	0.21	39.8	2.39	21.3	1.99	11.1	52
Bradford City	2089	337	11.08	0.41	0.04	0.48	0.93	19.0	0.59	43.3	2.15	24.6	1.66	22.3	52
Bradford South & West	1639	316	11.06	0.45	0.08	0.37	0.90	18.5	0.43	42.1	2.14	24.7	1.81	18.7	41
Calderdale	2518	324	11.09	0.51	0.09	0.40	0.99	18.2	0.44	45.1	2.21	29.9	1.69	19.8	40
East Leeds	2314	278	11.12	0.61	0.15	0.32	1.08	18.8	0.53	46.4	2.32	34.5	1.76	20.1	30
Eastern Wakefield	2105	355	11.00	0.74	0.09	0.39	1.22	17.9	0.33	48.5	2.52	34.4	2.16	16.3	32
Huddersfield Central	1593	273	11.09	0.27	0.14	0.37	0.78	19.6	0.78	35.2	2.22	14.7	1.83	26.4	47
Leeds North East	1598	248	11.15	0.36	0.10	0.27	0.73	18.7	0.81	35.9	2.03	20.2	1.80	34.3	37

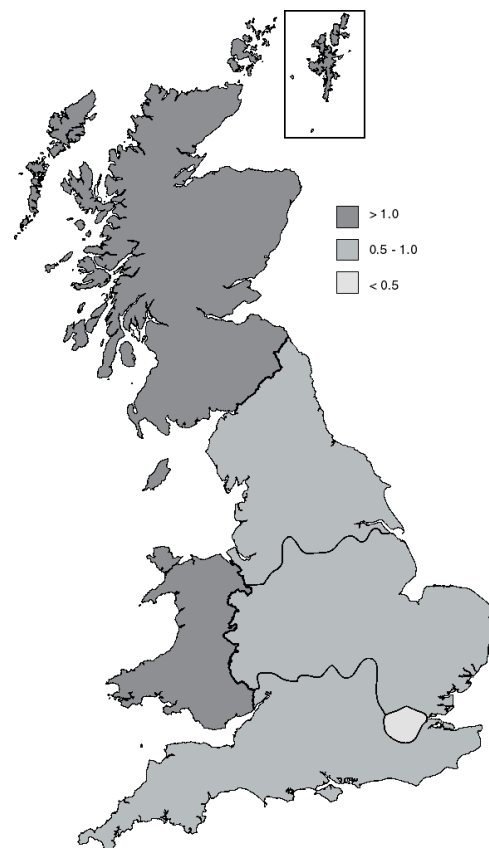


Leeds North West	1719	261	11.22	0.36	0.13	0.34	0.83	19.0	0.56	36.8	2.27	21.5	1.70	24.9	1.2	41
Leeds West	1456	250	11.19	0.64	0.10	0.41	1.15	18.6	0.41	49.2	2.32	34.4	1.85	16.8	2.4	36
North Bradford	982	318	11.06	0.28	0.14	0.37	0.78	18.4	0.60	39.3	1.98	18.6	1.49	26.1		47
North Kirklees	2342	298	11.02	0.50	0.16	0.28	0.93	18.1	0.59	41.9	2.22	28.2	1.76	21.8		30
South Huddersfield	1073	315	11.07	0.17	0.10	0.35	0.61	18.5	0.96	28.6	2.14	9.8	1.71	34.3	0.6	57
South Leeds	2213	260	11.10	0.67	0.12	0.45	1.24	18.3	0.67	48.8	2.55	34.6	1.94	24.2	1.2	36
Wakefield West	1806	391	11.03	0.59	0.08	0.33	1.01	17.9	0.73	40.9	2.46	30.7	1.93	26.9		33
South	134060	19978	11.04	0.26	0.05	0.22	0.53	18.3	0.41	25.8	2.06	15.0	1.70	15.9		42
Avon, Gloucestershire & Wiltshire	25541	4675	11.11	0.39	0.07	0.20	0.66	18.3	0.50	32.2	2.06	22.1	1.77	20.3		31
Bath & North East Somerset	1837	290	10.92	0.56	0.06	0.17	0.79	17.4	0.66	38.3	2.06	30.7	1.83	24.5		22
Bristol North	2157	271	11.27	0.43	0.12	0.21	0.76	19.1	0.59	39.5	1.92	27.3	1.57	25.5	1.5	28
Bristol South & West	1816	287	11.09	0.37	0.13	0.29	0.78	18.7	0.56	36.6	2.14	22.3	1.64	27.9	1.0	37
Cheltenham & Tewkesbury	1578	300	11.16	0.31	0.05	0.18	0.55	18.8	0.90	27.7	2.04	17.0	1.83	36.7		33
Cotswold & Vale	2276	298	11.16	0.27	0.04	0.23	0.53	18.8	0.56	26.5	2.01	14.8	1.82	21.1		43
Kennet & North Wiltshire	2668	586	10.97	0.32	0.02	0.16	0.50	17.5	0.44	26.1	1.93	18.9	1.70	16.9	0.3	32
North Somerset	2146	283	11.13	0.45	0.09	0.15	0.69	18.4	0.45	33.9	2.04	25.1	1.80	18.0		22
South Gloucestershire	3167	290	11.21	0.54	0.04	0.24	0.82	18.7	0.36	38.6	2.13	28.6	1.88	13.4		29
South Wiltshire	1206	572	10.94	0.46	0.06	0.19	0.71	17.2	0.36	32.5	2.17	24.1	1.92	13.3		27
Swindon	2410	596	11.04	0.21	0.02	0.15	0.38	18.5	0.28	20.6	1.85	12.1	1.72	12.6		39
West Gloucestershire	2822	300	11.17	0.31	0.11	0.25	0.67	18.0	0.56	30.0	2.23	18.0	1.72	21.0		37
West Wiltshire	1458	602	11.10	0.55	0.06	0.21	0.83	18.3	0.47	39.2	2.14	30.4	1.84	20.9	0.0	25
Dorset & Somerset	13224	2703	11.21	0.49	0.04	0.26	0.79	18.6	0.37	34.9	2.27	25.6	1.93	15.9		32
Bournemouth	1541	286	11.27	0.61	0.04	0.27	0.93	18.3	0.34	38.1	2.43	28.0	2.19	15.0		29
Mendip	1283	340	11.19	0.34	0.04	0.28	0.66	18.4	0.38	32.4	2.04	20.3	1.67	16.8	3.5	42
North Dorset	839	271	11.27	0.64	0.06	0.23	0.93	19.2	0.54	38.4	2.43	30.6	2.10	25.1		25
Poole	1426	257	11.33	0.53	0.00	0.23	0.76	19.0	0.40	32.3	2.36	26.5	2.01	16.7		30
Somerset Coast	1753	369	11.08	0.66	0.07	0.37	1.09	18.5	0.25	43.6	2.51	31.4	2.11	11.7	3.3	34
South & East Dorset	1857	282	11.31	0.40	0.03	0.17	0.60	18.8	0.55	28.0	2.14	23.1	1.72	20.6		28
South Somerset	1753	326	11.13	0.44	0.06	0.18	0.68	18.4	0.33	31.6	2.16	23.3	1.89	13.5	3.1	26
South West Dorset	1551	277	11.26	0.48	0.03	0.23	0.74	19.0	0.34	35.0	2.12	26.7	1.81	14.1		31
Taunton Deane	1221	295	11.02	0.37	0.06	0.36	0.80	18.2	0.27	37.0	2.15	21.4	1.73	13.6	4.1	45
Hampshire & Isle of Wight	20734	2921	10.97	0.19	0.06	0.23	0.48	17.9	0.47	23.9	2.03	12.3	1.57	17.1		47
Blackwater Valley & Hart	2202	321	10.94	0.15	0.11	0.24	0.50	18.0	0.55	22.1	2.27	10.0	1.50	20.6		48
East Hampshire	1910	291	10.96	0.18	0.14	0.22	0.54	17.8	0.35	22.7	2.38	10.7	1.68	15.1	0.7	41

Eastleigh & Test Valley South	1850	271	10.90	0.11	0.02	0.23	0.36	17.7	0.56	18.5	1.96	9.2	1.20	22.1	0.0	64
Fareham & Gosport	2323	359	10.98	0.13	0.04	0.18	0.34	17.5	0.72	19.8	1.73	8.9	1.44	24.5	0.8	53
Isle of Wight	1541	279	10.70	0.43	0.07	0.40	0.90	16.3	0.44	39.8	2.25	25.8	1.65	20.4	2.9	44
Mid Hampshire	1733	269	10.99	0.14	0.03	0.26	0.43	18.0	0.52	22.7	1.90	10.0	1.41	20.1	1.1	60
New Forest	1895	294	10.95	0.14	0.02	0.14	0.30	18.2	0.61	17.0	1.76	9.9	1.45	6.5	0.0	47
North Hampshire	2819	258	11.14	0.12	0.03	0.18	0.33	18.3	0.14	19.0	1.76	7.8	1.55	6.6	0.4	55
Portsmouth City	2020	320	10.91	0.23	0.11	0.22	0.56	17.7	0.40	26.3	2.12	13.8	1.68	17.5	0.9	39
Southampton City	2441	259	11.06	0.35	0.07	0.27	0.69	18.9	0.49	34.4	2.00	20.5	1.72	20.5	0.0	39
Kent & Medway	30530	2098	11.03	0.10	0.04	0.21	0.36	18.9	0.28	17.7	2.04	6.2	1.71	7.6		59
Dartford & Gravesham	5796	353	11.17	0.07	0.03	0.22	0.32	19.6	0.23	16.4	1.96	5.1	1.47	6.5		69
East Kent Area	7466	485	10.99	0.09	0.04	0.24	0.37	20.3	0.36	16.7	2.22	4.9	1.79	9.3		65
Maidstone Weald	4781	297	10.95	0.12	0.08	0.19	0.39	17.7	0.25	19.2	2.02	6.7	1.80	7.4		49
Medway	4880	374	10.85	0.18	0.03	0.21	0.43	17.5	0.15	21.4	2.03	10.7	1.73	4.5		49
South West Kent	4708	291	11.29	0.09	0.02	0.15	0.25	19.7	0.41	13.7	1.85	5.5	1.63	10.3		60
Swale	2899	298	10.85	0.08	0.08	0.27	0.43	17.2	0.19	20.8	2.05	4.4	1.85	6.0		63
Surrey & Sussex	20726	4873	11.04	0.18	0.04	0.22	0.43	18.1	0.41	22.1	1.95	11.2	1.56	17.2		50
Adur, Arun & Worthing	2240	205	11.39	0.14	0.03	0.25	0.41	18.9	0.48	21.0	1.98	8.8	1.56	20.5		61
Crawley	1129	182	11.35	0.34	0.08	0.38	0.81	18.5	0.54	34.6	2.33	18.7	1.82	22.5		47
East Elmbridge & Mid Surrey	2251	410	10.95	0.12	0.01	0.21	0.34	18.6	0.52	17.8	1.90	7.8	1.53	22.2		62
East Surrey	5486	266	10.86	0.25	0.05	0.26	0.56	17.5	0.22	28.2	1.97	15.8	1.57	9.8		46
Guildford & Waverley	2444	500	10.84	0.10	0.02	0.14	0.26	17.7	0.41	15.4	1.69	7.0	1.40	15.6		54
Horsham	902	263	11.40	0.08	0.00	0.15	0.23	18.6	0.33	13.7	1.67	6.5	1.18	16.0		65
Mid Sussex	1314	231	11.35	0.30	0.03	0.14	0.47	18.3	0.54	24.2	1.95	18.2	1.64	20.8		30
Surrey Heath & Woking	3335	2592	10.89	0.13	0.05	0.20	0.38	18.0	0.49	19.9	1.92	9.1	1.45	21.2		53
Western Sussex	1625	224	11.30	0.11	0.08	0.16	0.34	18.1	0.43	17.9	1.93	6.7	1.60	19.2		47
Thames Valley	23305	2708	10.95	0.31	0.05	0.24	0.60	17.7	0.48	29.3	2.04	18.7	1.57	19.6	1.5	40
Aylesbury	2076	336	10.73	0.16	0.04	0.25	0.44	16.4	0.64	25.3	1.74	11.9	1.33	25.6	0.0	57
Bracknell	1223	146	10.80	0.36	0.05	0.16	0.58	16.9	0.34	30.8	1.89	21.9	1.66	14.4	0.0	28
Cherwell Vale	968	67	10.85	0.39	0.01	0.36	0.76	16.8	1.00	31.3	2.43	19.4	2.00	35.8	1.5	47
Chiltern & South Bucks	1611	158	11.23	0.23	0.03	0.22	0.47	18.5	0.61	22.2	2.11	12.7	1.80	21.5	1.3	47
Milton Keynes	2654	331	10.81	0.37	0.08	0.20	0.64	17.8	0.20	32.6	2.00	20.8	1.75	9.4	2.1	31
Newbury	1749	220	11.31	0.28	0.05	0.29	0.62	18.9	0.70	28.2	2.19	15.9	1.00	25.9	3.6	47
North East Oxfordshire	839	69	10.91	0.26	0.00	0.17	0.43	17.0	0.80	23.2	1.88	17.4	1.50	30.4	0.0	40
Oxford City	1333	124	11.00	0.35	0.08	0.21	0.64	17.6	0.41	30.6	2.08	19.4	1.79	16.1	2.4	33

Reading	1411	192	11.30	0.27	0.11	0.32	0.70	19.4	0.52	30.7	2.29	18.2	21.9	2.1	46
Slough	1482	205	10.80	0.44	0.04	0.21	0.70	18.1	0.29	30.2	2.31	23.4	12.2	1.5	30
South East Oxfordshire	695	73	10.82	0.22	0.07	0.30	0.59	16.9	0.32	32.9	1.79	16.4	22.5	1.4	51
South West Oxfordshire	2260	173	10.87	0.32	0.10	0.30	0.73	18.0	0.50	35.3	2.07	20.2	22.5	2.9	41
Windsor, Ascot & Maidenhead	1291	170	10.76	0.37	0.00	0.22	0.59	17.8	0.30	29.4	2.00	22.9	16.5	0.0	37
Wokingham	1790	264	10.91	0.31	0.06	0.17	0.53	17.3	0.35	26.1	2.04	18.9	12.1	0.0	32
Wycombe	1923	180	11.15	0.29	0.01	0.21	0.51	17.9	0.57	28.3	1.78	20.6	21.1	1.7	41
<b>WALES</b>	<b>36817</b>	<b>6749</b>	<b>11.76</b>	<b>0.48</b>	<b>0.11</b>	<b>0.50</b>	<b>1.09</b>	<b>21.4</b>	<b>0.53</b>	<b>45.1</b>	<b>2.41</b>	<b>26.5</b>	<b>1.79</b>		<b>46</b>
Mid & West	11854	2521	11.81	0.43	0.11	0.55	1.10	21.3	0.40	44.9	2.44	24.3	17.6		50
Bridgend	1494	373	11.73	0.51	0.11	0.46	1.07	21.0	0.28	41.8	2.58	24.9	13.7		42
Carmarthenshire	2070	434	11.73	0.26	0.14	0.44	0.84	21.0	0.40	36.6	2.30	16.4	17.3		53
Ceredigion	916	143	11.91	0.51	0.09	0.49	1.08	21.8	0.42	49.0	2.21	32.2	19.6		45
Neath & Port Talbot	1789	408	11.82	0.47	0.16	0.60	1.23	21.5	0.33	49.5	2.47	28.7	14.7		49
Pembrokeshire	1437	284	12.06	0.61	0.07	0.45	1.13	22.6	0.78	46.5	2.44	31.7	31.7		40
Powys	1509	330	11.86	0.45	0.06	0.56	1.07	21.4	0.37	43.9	2.42	24.8	17.6		52
Swansea	2639	549	11.73	0.37	0.12	0.73	1.22	20.7	0.33	48.5	2.51	20.0	13.5		60
North Wales	8392	1309	11.77	0.45	0.13	0.47	1.04	21.7	0.61	42.5	2.44	24.2	24.5		45
Anglesey	824	143	11.69	0.53	0.13	0.50	1.15	21.3	0.54	47.6	2.39	27.3	22.4		43
Conwy	1341	177	11.78	0.49	0.03	0.34	0.87	21.5	0.70	35.6	2.43	23.7	26.6		39
Denbighshire	1381	153	11.71	0.35	0.23	0.36	0.94	21.7	0.55	38.6	2.40	22.9	25.5		38
Flintshire	1927	309	11.76	0.33	0.16	0.55	1.04	21.4	0.51	41.7	2.50	18.8	20.1		53
Gwynedd	1504	297	11.73	0.49	0.08	0.48	1.05	22.0	0.52	45.1	2.33	26.6	22.9		46
Wrexham	1415	230	11.90	0.57	0.12	0.55	1.24	22.3	0.86	48.3	2.56	29.1	30.4		44
South East	16571	2919	11.72	0.52	0.10	0.48	1.11	21.4	0.58	46.6	2.37	29.2	25.5		44
Blaenau Gwent	896	188	11.79	1.36	0.15	0.58	2.09	20.8	0.62	68.6	3.03	58.0	26.6		28
Caerphilly	2305	379	11.66	0.62	0.07	0.49	1.17	21.2	0.56	48.5	2.44	35.6	23.5		41
Cardiff	3664	565	11.73	0.33	0.10	0.40	0.82	22.0	0.61	38.1	2.13	19.6	27.8		49
Merthyr Tydfil	752	180	11.69	0.34	0.25	0.63	1.22	21.3	0.59	51.7	2.43	22.8	24.4		52
Monmouthshire	915	214	11.68	0.54	0.02	0.27	0.83	21.1	0.56	45.3	1.94	36.9	24.8		33
Newport	1770	253	11.67	0.53	0.08	0.38	0.99	21.7	0.66	46.2	2.13	33.6	26.1		38
Rhondda Cynon Taff	3163	622	11.72	0.47	0.11	0.60	1.18	20.9	0.52	47.9	2.45	27.0	24.8		51
Torfaen	1418	174	11.76	0.96	0.17	0.58	1.70	20.9	0.64	61.5	2.76	46.6	25.3		34
Vale of Glamorgan	1688	344	11.76	0.14	0.06	0.49	0.69	21.7	0.47	34.6	1.97	9.6	25.0		71
<b>ENGLAND &amp; WALES</b>	<b>582361</b>	<b>123036</b>	<b>11.09</b>	<b>0.33</b>	<b>0.07</b>	<b>0.27</b>	<b>0.66</b>	<b>18.8</b>	<b>0.42</b>	<b>31.3</b>	<b>2.12</b>	<b>18.7</b>	<b>1.75</b>		<b>41</b>

<b>SCOTLAND</b>	<b>58583</b>	<b>10926</b>	<b>11.50</b>	<b>0.52</b>	<b>0.17</b>	<b>0.60</b>	<b>1.29</b>	<b>20.5</b>	<b>0.99</b>	<b>47.1</b>	<b>2.74</b>	<b>23.3</b>	<b>2.22</b>	<b>37.9</b>	<b>0.8</b>	<b>46</b>
Argyll & Clyde	5059	890	11.51	0.83	0.16	0.59	1.58	20.4	1.19	51.5	3.07	30.8	2.69	43.4	1.0	37
Ayrshire & Arran	4641	781	11.49	0.35	0.11	0.73	1.19	20.1	1.26	46.0	2.59	17.1	2.05	46.2	0.2	61
Borders	1374	348	11.39	0.42	0.09	0.41	0.91	19.9	0.80	40.5	2.25	25.6	1.63	35.6	1.2	45
Dumfries & Galloway	1756	276	11.43	0.24	0.05	0.42	0.71	20.7	1.01	33.3	2.14	16.3	1.49	34.8	1.1	58
Fife	3138	707	11.45	0.44	0.14	0.44	1.02	20.5	0.96	40.0	2.54	19.4	2.26	33.5	0.8	44
Forth Valley	3318	561	11.47	0.47	0.16	0.51	1.14	20.6	0.57	41.0	2.78	20.5	2.31	25.7	0.4	45
Grampian	6136	723	11.66	0.61	0.15	0.63	1.39	20.9	0.94	50.4	2.76	28.0	2.18	35.9	0.4	45
Greater Glasgow	10011	2714	11.50	0.57	0.24	0.75	1.57	20.4	0.98	53.4	2.94	24.7	2.31	39.6	0.5	48
Highland	2732	531	11.45	0.43	0.21	0.48	1.12	20.0	1.37	44.8	2.50	21.5	2.02	51.0	0.9	43
Lanarkshire	7035	593	11.49	0.66	0.19	0.62	1.46	20.1	0.73	52.6	2.79	29.6	2.22	29.5	1.6	42
Lothian	8032	1337	11.39	0.43	0.15	0.58	1.16	20.7	0.94	45.6	2.56	20.1	2.13	37.2	0.7	50
Orkney	254	211	11.57	0.30	0.04	0.25	0.59	20.8	1.99	23.7	2.50	13.7	2.21	69.7	0.0	42
Shetland	310	291	11.65	0.33	0.10	0.34	0.78	21.3	3.67	32.6	2.39	15.1	2.20	81.8	0.3	44
Tayside	4505	831	11.62	0.33	0.25	0.47	1.06	21.0	0.92	39.6	2.67	16.2	2.05	36.8	0.8	45
Western Isles	282	132	11.86	0.40	0.28	1.08	1.77	22.5	1.06	57.6	3.07	24.2	1.66	52.3	0.0	61
<b>GREAT BRITAIN</b>	<b>640944</b>	<b>133962</b>	<b>11.13</b>	<b>0.34</b>	<b>0.08</b>	<b>0.30</b>	<b>0.72</b>	<b>19.0</b>	<b>0.47</b>	<b>32.7</b>	<b>2.20</b>	<b>19.1</b>	<b>1.80</b>	<b>18.8</b>		<b>42</b>
Isle of Man	957	289	11.06	0.79	0.1	0.26	1.16	18.0	1.1	47.1	2.46	37.4	2.12	41.2		22
Jersey	990	824	11.16	0.19	0.13	0.71	1.03	18.0	0.57	46.8	2.19	12.7	1.48	25.9	0.1	69



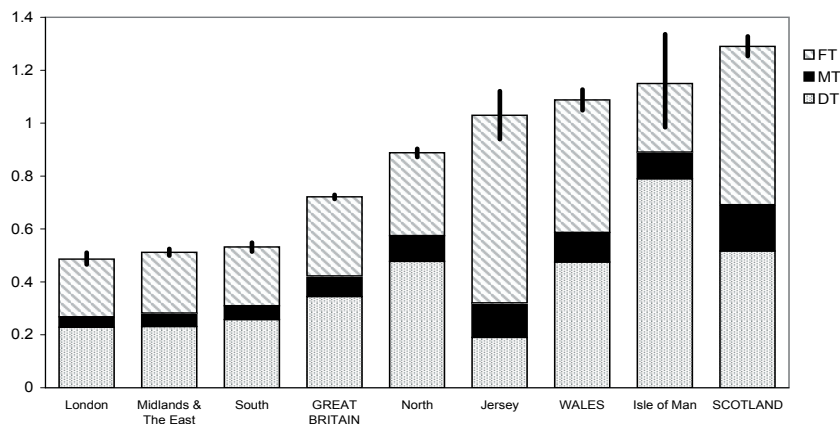
**Figure 1.** Dental caries experience ( $D_{3MFT}$ ) of 11-year-old children in Great Britain. BASCD coordinated NHS epidemiological programme survey of 11-year-old children – 2004/2005.

in England and Wales).

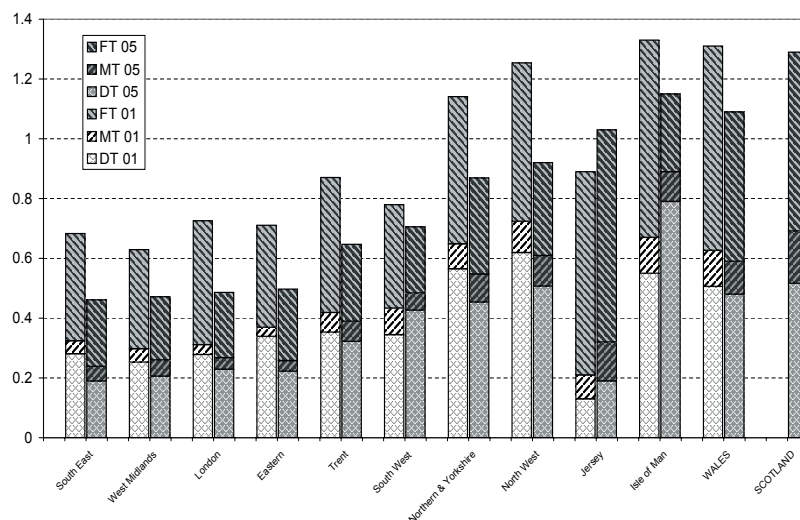
The results demonstrated a wide variation in prevalence across the regions, with mean values for DMFT for regions and countries ranging from 0.49 in London to 1.29 in Scotland. The mean value for DMFT across England was 0.64 (DT=0.32, MT=0.06, FT=0.25). The variation in mean disease levels within regions and countries was also marked. Overall, the extremes for mean DMFT values ranged between 0.19 for Harlow Primary Care Trust (PCT) and 2.09 in Blaenau Gwent Local Health Board (LHB). The corresponding values for DT ranged from 0.02 for South Peterborough PCT to 1.36 for Blaenau Gwent LHB, while for MT they ranged from 0 in several PCTs to 0.28 for Western Isles Health Board. Although a mean of 33% of this sample had evidence of dentinal caries experience (DMFT > 0), the 'regional' means ranged between 25% (London) and 47% (Scotland and Isle of Man). The mean DMFT for those with disease at the dentinal threshold was more than double the overall mean at 2.20.

The overall number of filled teeth remains low (FT = 0.30) with low proportions of restored dentinal caries and a low care index in areas with either high or low disease levels. The mean care index was 42% with a 'regional' range of 22% - 69%. In individual PCTs and boards the range of care index was from 90% in South Peterborough to 20% in Southern Norfolk and in Gateshead. The percentage of all children in the assessed sample from each area with at least one fissure sealant ranged from only 1.6% in Harlow to 81.8% in Shetland.

The geographical variation of caries experience is highlighted in map form in Figure 1. The lower levels of mean caries prevalence (DMFT < 1.0) were in England whilst Scotland, Wales, and the Isle of Man had mean DMFT levels between 1.09 and 1.29. Figure 2 presents the mean DMFT information as a bar chart; this shows an overall ranking of the regions and countries including the 95 per cent confidence intervals. The bar chart reveals that the area can be seen as comprising three broad groupings, the 'southern' areas with mean DMFT



**Figure 2.** Dental caries experience ( $D_3MFT$  and 95% confidence intervals) of 11-year-old children in English regions, Scotland, Isle of Man, and Jersey. BASCD coordinated NHS epidemiological programme survey of 11-year-old children – 2004/2005.



**Figure 3.** Dental caries experience ( $D_3MFT$  and components) of 11-year-old children in English regions, Scotland, Isle of Man, and Jersey in 2000/2001 and 2004/2005 BASCD coordinated NHS epidemiological programme survey of 11-year-old children – 2004/2005.

values of approximately 0.5, areas outside England with higher DMFT, and an intermediate northern region.

Figure 3 shows a comparison of the mean DMFT results (and components) from 2004/2005 with those from the 2000/2001 surveys using the NHS boundaries previously in place.

### Discussion

Although there is an increasing focus on local and regional variations in dental health, the bar chart in Figure 2 should not be seen, or used, as a simple league table; as small differences between means which do not exceed the 95 per cent confidence intervals should not be given undue weight and intraregional variation is considerable. These results can be compared with those of earlier BASCD coordinated surveys of 12-year-olds conducted in 2000/2001 (Pitts et al, 2002), 1996/97 (Pitts et al, 1998), 1992/93 (Pitts and Palmer, 1994), and 1988/89 (Evans and Dowell, 1990). Part of the observed improvement can be explained by the younger age group examined for this survey (average age 11.1 compared to 12.5 previously). The 25.8% apparent improvement in overall DMFT in England and Wales must be interpreted cautiously, in the light of this difference.

The care index (FT/DMFT x 100%) reflects the restorative care of those who have suffered disease, it therefore has to be viewed in conjunction with DMFT. These results are of interest in studying the provision of dental services to this age group. The data in Table 1 shows the wide variations in the care index. The overall level is disturbingly low with just 42% of the dental caries in permanent teeth being restored, lower than the

### References

- Evans, D.J. and Dowell, T.B. (1990): The dental caries experience of 12-year-old children in Great Britain. A survey coordinated by the British Association for the Study of Community Dentistry in 1988-89. *Community Dental Health* 7, 307-314.
- Pitts, N.B. (Ed) (1997): The BASCD coordinated NHS Dental Epidemiology Programme caries prevalence surveys 1985/6 - 1995/96. *Community Dental Health* 14, (Suppl 1), 1-51.
- Pitts, N.B., Evans, D.J., Nugent Z.J. and Pine, C.M.(2002) The dental caries experience of 12-year-old children in England and Wales. Surveys coordinated by the British Association for the Study of Community Dentistry in 2000 / 2001. *Community Dental Health* 19, 46-53.
- Pitts, N.B., Evans, D.J. and Nugent Z.J. (1998) The dental

48% reported for 12-year-olds in England and Wales in 2000/2001 which compares with the (already low) figure of 58% found in 14-year-old children in 1998/99 (Pitts et al, 2000). It should be appreciated that data relates to permanent teeth and debates about management strategies in primary teeth are not relevant here.

There is marked variation in the percentage of children with at least one pit and fissure sealant, with a tendency for low use in lower caries areas. The mean percentage values of London (13%), Midlands and the East(14%), and South (16%) were below those seen for Wales (23%), North (21%), and Scotland (38%).

Although overall improvements in oral health are welcome, these findings demonstrate the continuing need for more effective preventive strategies and treatment services for this important age group. As the condition of the permanent teeth in the pre-teen years will, to a large extent, determine the future dental health of emerging population cohorts of young adults, there is thus a continuing need for the monitoring of trends at both the local and national levels. This is also required to establish whether oral health strategy targets can be met.

### Acknowledgements

The authors are indebted to all those who assist in the BASCD co-ordinated epidemiology Programme, in particular to the 'regional/country' coordinators and trainers and all the examining teams. The views expressed are those of the authors and not necessarily those of the UK Departments of Health. Professor Pitts and Dr Nugent acknowledge support from the Chief Scientist Office of the Scottish Executive Department of Health.

caries experience of 12-year-old children in the United Kingdom. Surveys co-ordinated by the British Association for the Study of Community Dentistry in 1996/97. *Community Dental Health* 15, 49-54.

- Pitts, N.B., Evans, D.J., and Nugent, Z.J. (2000) The dental caries experience of 14-year-old children in the United Kingdom. Surveys coordinated by the British Association for the Study of Community Dentistry in 1998/99. *Community Dent Health* 17:48-53.

Pitts, N.B. and Palmer, J. (1994) The dental caries experience of 5-, 12- and 14-year-old children in Great Britain. Surveys coordinated by the British Association for the Study of Community Dentistry in 1991/92, 1992/93 and 1990-91. *Community Dental Health* 11, 42-45.